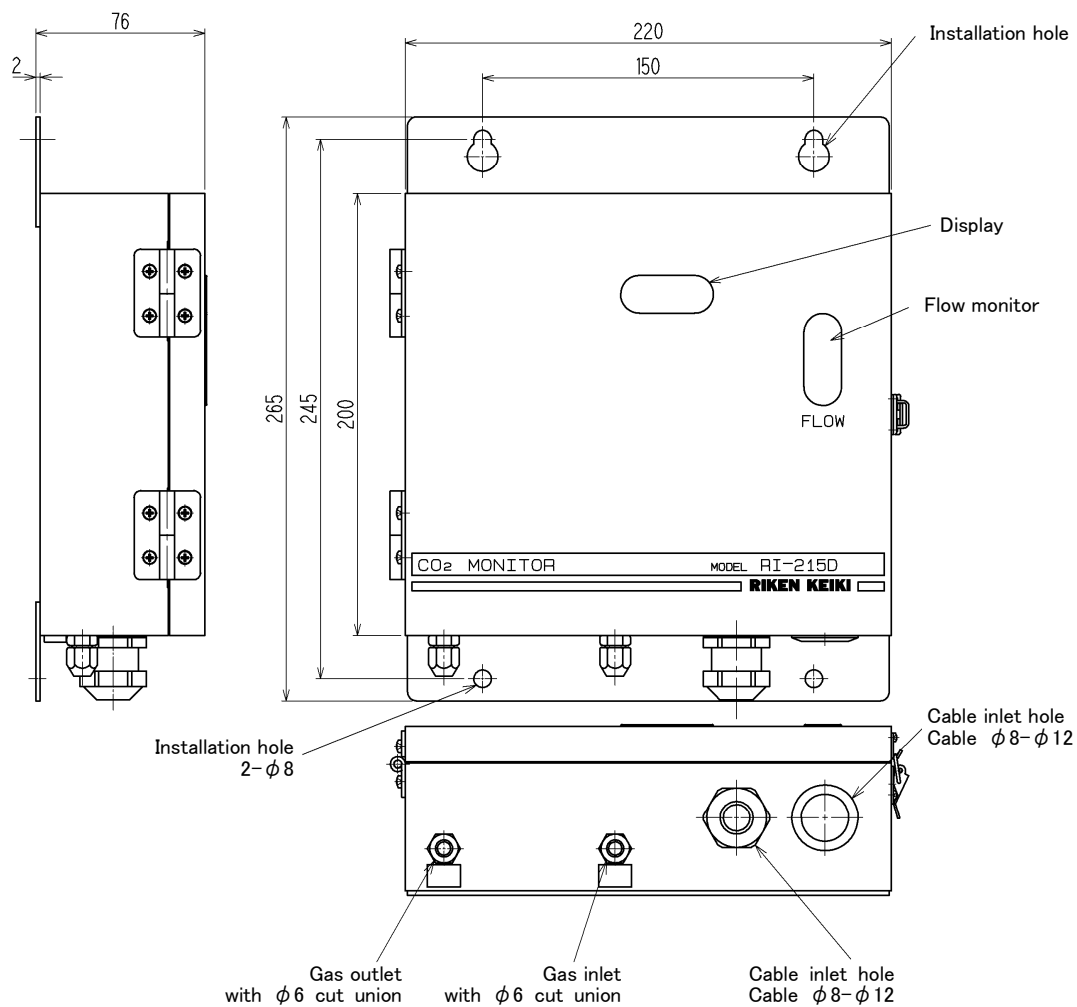


GAS MONITOR
RI-215D SPECIFICATION

Model	RI-215D
Detection principle	Non-dispersive infrared absorption method
Gas to be detected	Carbon dioxide (CO ₂)
Display	LCD digital display
Detection range*	0-2000ppm/0-5000ppm/0-10000ppm
Detection method	Pump suction method
Suction flow	1L/min and above
Alarm point*	1000ppm[Standard setting]
Output	Gas density signal (4-20mADC)/ Alarm Contact
Output accuracy (under an identical condition)	Within $\pm 5\%$ F.S. (For the gas density signal output)
Repeatability (under an identical condition)	Within $\pm 3\%$ F.S. (For the gas density signal output)
Gas alarm type	Single-step alarm (H)
Gas alarm pattern	Non latching (auto-reset)
Gas alarm contact	No-voltage contact 1a and normally de-energized (energized in response to an alarm)
Fault alarm/Self diagnosis	System abnormalities/sensor connection abnormalities
Fault alarm display	Alarm detail display
Contact capacity	125VAC, 0.5A(Resistance load)
Transmission type	Analog transmission
Transmission specifications	4-20mADC (no-insulation/load resistance under 300 Ω)
Power supply	100VAC $\pm 10\%$ /110VAC $\pm 10\%$ /110VAC $\pm 10\%$ (50/60Hz)
Power consumption	Max 12VA
Piping port	Inlet : Brass union for Cu pipe[$\phi 6$ (OD)- $\phi 4$ (ID)] outlet : No union or • Brass union for Cu pipe[$\phi 6$ (OD)- $\phi 4$ (ID)]
Initial clear	Approx. 1 minute
Warming-up time	Approx. 30 minutes
Operating temperatures	0-40°C (at a constant condition)
Operating humidities	10-90%RH (Non-condensing)
Structure	Wall mounting type
Outline dimensions	Approx. 220 (W) \times 200 (H) \times 70 (D)mm (projection portions excluded)
Weight	Approx. 3.6kg
Outer color	Munsell 2.5Y9/2

※ Please specify your request when ordering.

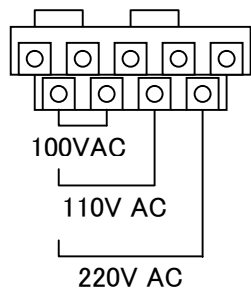
Outline Drawings



Terminal Drawings

Signal output
0-10VDC or
4-20mADC

+ - Contact

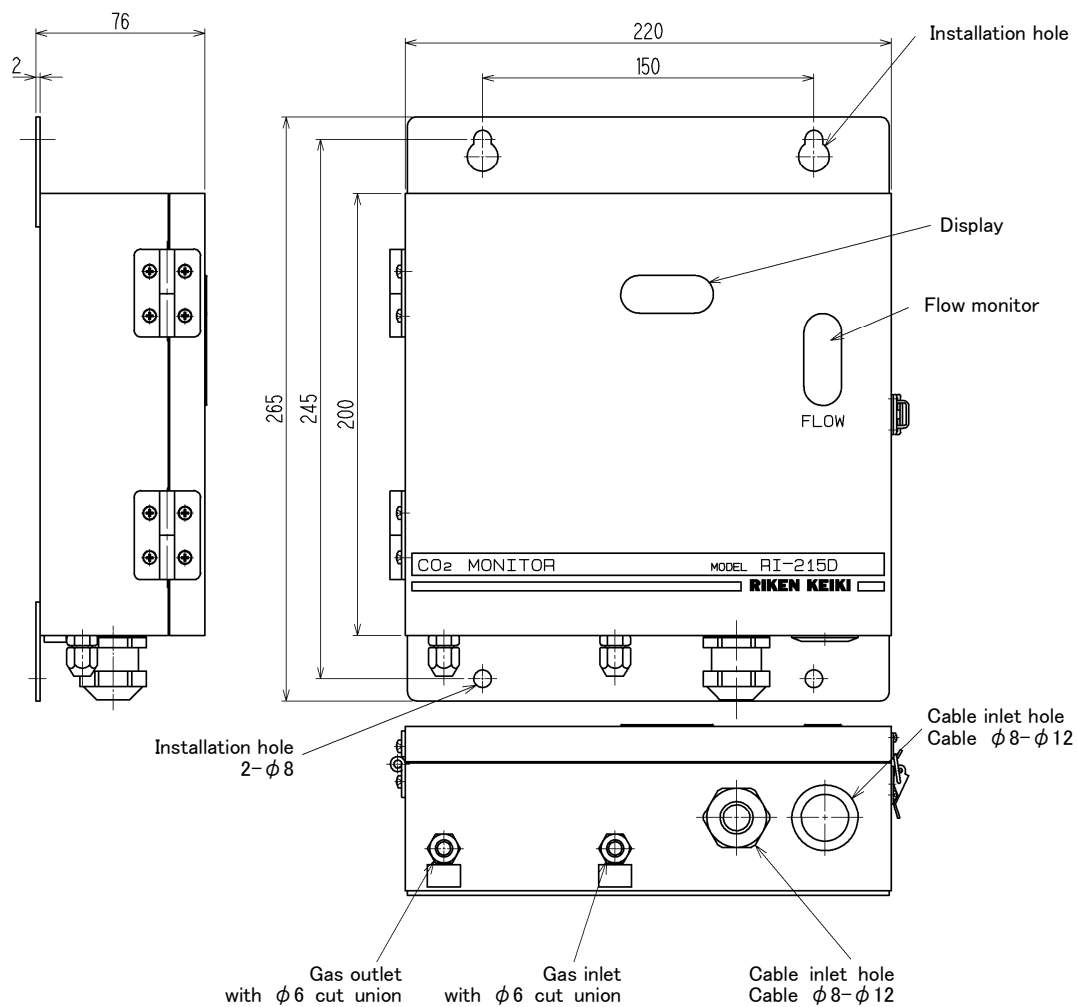


GAS MONITOR
RI-215D SPECIFICATION

Model	RI-215D
Detection principle	Non-dispersive infrared absorption method
Gas to be detected	Carbon dioxide (CO ₂)
Display	LCD digital display
Detection range*	0-5vol%
Detection method	Pump suction method
Suction flow	1L/min and above
Alarm point*	2.5vol%[Standard setting]
Output	Gas density signal (4-20mADC)/ Alarm Contact
Output accuracy (under an identical condition)	Within ±5% F.S. (For the gas density signal output)
Repeatability (under an identical condition)	Within ±3% F.S. (For the gas density signal output)
Gas alarm type	Single-step alarm (H)
Gas alarm pattern	Non latching (auto-reset)
Gas alarm contact	No-voltage contact 1a and normally de-energized (energized in response to an alarm)
Fault alarm/Self diagnosis	System abnormalities/sensor connection abnormalities
Fault alarm display	Alarm detail display
Contact capacity	125VAC, 0.5A(Resistance load)
Transmission type	Analog transmission
Transmission specifications	4-20mADC (no-insulation/load resistance under 300Ω)
Power supply	100VAC±10%/110VAC±10%/110VAC±10% (50/60Hz)
Power consumption	Max 12VA
Piping port	Inlet : Brass union for Cu pipe[φ6 (OD)-φ4 (ID)] outlet : No union or • Brass union for Cu pipe[φ6 (OD)-φ4 (ID)]
Initial clear	Approx. 1 minute
Warming-up time	Approx. 30 minutes
Operating temperatures	0-40°C (at a constant condition)
Operating humidities	10-90%RH (Non-condensing)
Structure	Wall mounting type
Outline dimensions	Approx. 220 (W) × 200 (H) × 70 (D)mm (projection portions excluded)
Weight	Approx. 3.6kg
Outer color	Munsell 2.5Y9/2

※ Please specify your request when ordering.

Outline Drawings



Terminal Drawings

